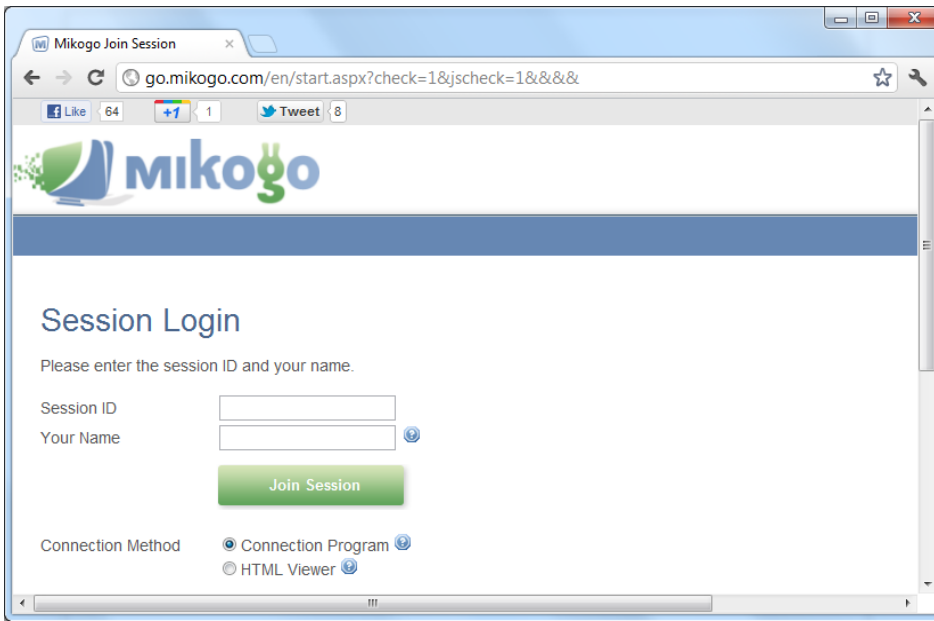


## Mikogo Participant User Guide for Windows Users

To join a Mikogo session:

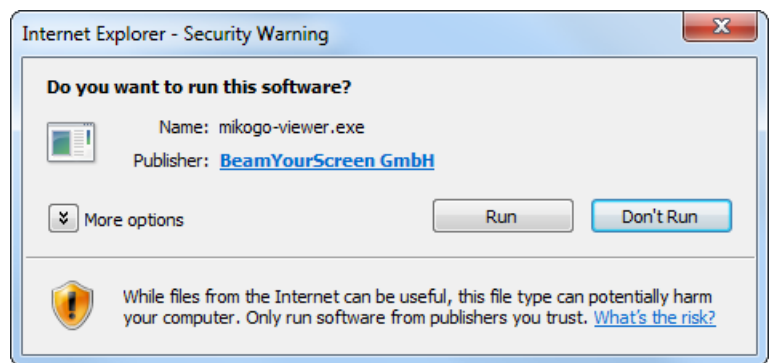
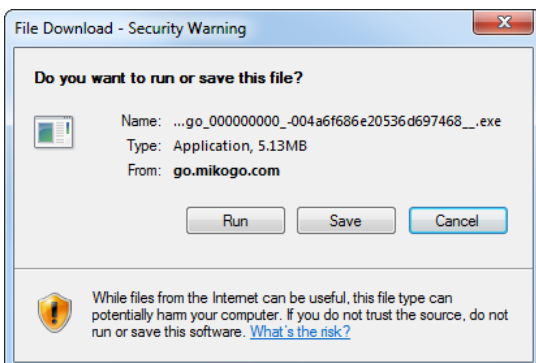
1. Go to <http://go.mikogo.com>,
2. Enter the 9-digit Session ID and your name,
3. Click on the "Join Session" button.




You can either join a session using the connection program or the HTML Viewer:

- Use the **connection program** to actively participate in a session. The connection program will allow you to share your screen, obtain or give remote keyboard or mouse control, transfer files, record the session, see the participant list and use the whiteboard and pointer.
- Use the **browser-based HTML Viewer** to join a session in view-only mode. The advantage is that you do not need to run any software. You only need a browser to see the screen of the presenter through a secure website. No Java, no ActiveX, no Flash required.

If you use the connection program, you will be asked if you want to Run or Save the file. Click "Run" (you may be asked twice). Alternatively, save the file and then double-click the downloaded file to run it.



A few seconds later, the  icon will appear in the system tray in the bottom right corner of your screen and the screen contents will load inside the Mikogo viewing window.

If you use the HTML viewer, the screen contents will load inside your browser. You can zoom in and out with Ctrl +/- and switch to full screen mode with F11.